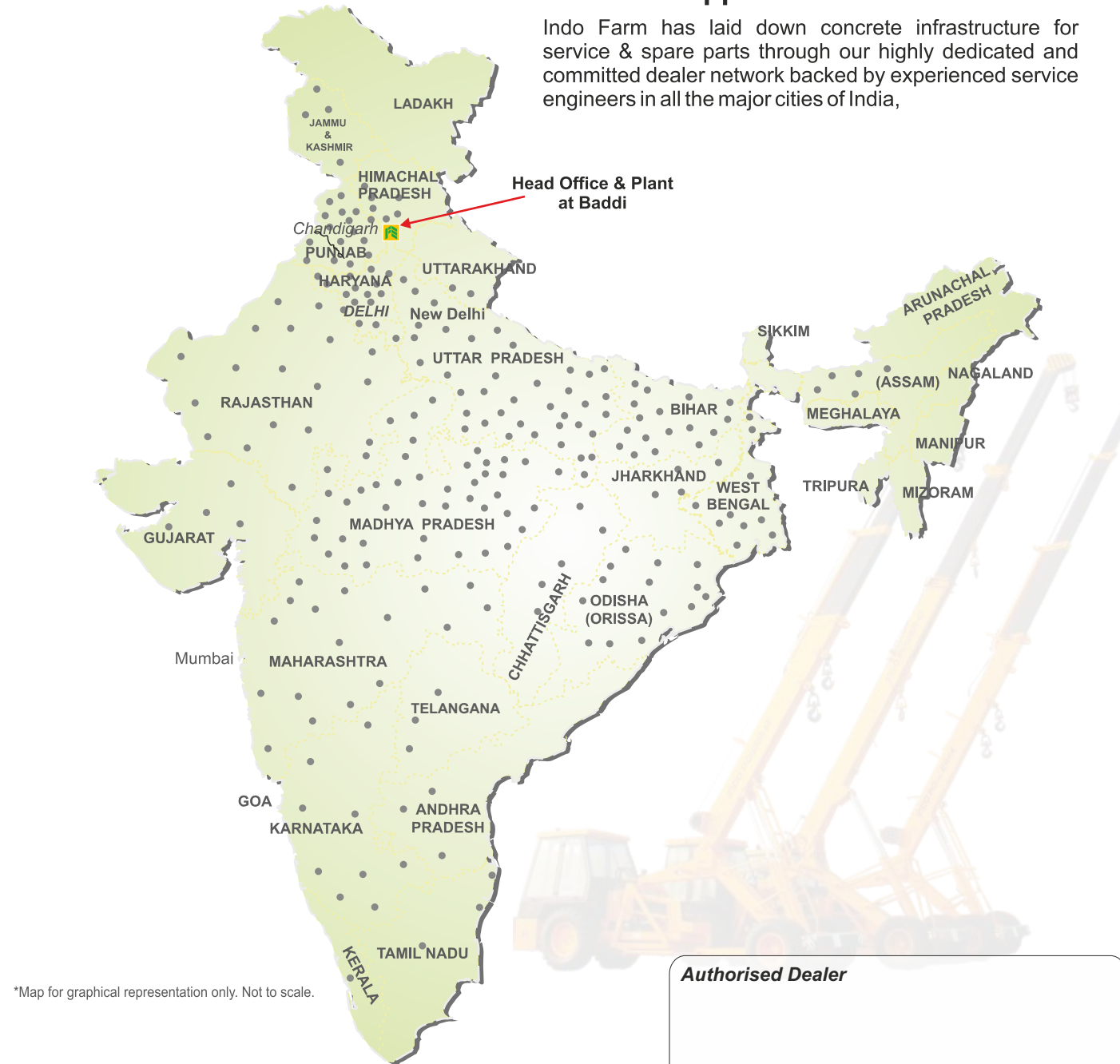


All India Network

Product Support

Indo Farm has laid down concrete infrastructure for service & spare parts through our highly dedicated and committed dealer network backed by experienced service engineers in all the major cities of India,



*Map for graphical representation only. Not to scale.

INDO FARM
EQUIPMENT LIMITED
An ISO 9001-2015 Certified Company



Head Office & Plant:
Export Promotion Industrial Park, Phase-II,
Baddi-173 205, Distt. Solan, H.P. (India)
Tel. : +91-1795-274242-247, 78329-25002
Fax : +91-1795-274308-309
Email : mail@indofarm.in, Website : www.indofarm.in

Registered Office:
SCO 859, NAC Manimajra, Chandigarh-Kalka Road,
Chandigarh - 160 101
Tel. : +91-172-2730060, 2730059
Fax: +91-172-2734913

Product Range



INDO POWER

THE SYMBOL OF STRENGTH

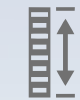
23FN

23T-64' (4WD)

Self Rope Compensation
Pick 'N' Carry Hydraulic Mobile Crane



Load Capacity
23 T



Boom Height
19.59 m, 22.58 m with fly jib



Horizontal Reach
17 m, 20.15 m with fly jib



Engine Power
101 hp @ 2200 rpm



BS IV
Engine



High TORQUE
Engine



Best in Class
STABILITY



4 Side
VISIBILITY



Shortest
TURNING RADIUS



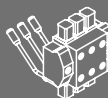
Heavy Duty
TRANSMISSION



Less
MAINTENANCE



Less FUEL
Consumption



Technical Specifications

ENGINE

Model & Type	74 kW/101 hp @ 2200 rpm, Volvo - Eicher make CEV BS IV Diesel Engine, TCI-High Pressure Common Rail System (HPCR) Technology, Turbo charged water cooled, ECU control engine management system
--------------	--

TRANSMISSION

Type	Heavy duty synchromesh transmission with auxillary gearbox, ten forward and two reverse speeds with high and low selector
------	---

AXLE

Front	Rigidly mounted
Rear	Mounted with two semielliptical springs
Speed (Top)	48 kmph
Creep Speed	0.76 kmph
Gradeability	40% Unladen
Clutch	Hydraulically pneumatically actuated, single plate, heavy duty dry friction type clutch plate.
Drive	4 Wheel drive

STEERING

Type	Articulated power steering, hydraulically controlled through two double acting hydraulic rams
Articulation	upto 40°
Turning Radius	7.0 m

BRAKES

Front & Rear	Fully air operated 'S' cam dual circuit brakes on front & rear axles.
Parking	Air operated fail safe brakes on front & rear wheels

TYRES

Front & Rear	12.00x20 - 18 PR (8 Nos.)
Wheel Base	4 m
Wheel Tracks	
Front & Rear	1830 mm (center of twin wheels)

BOOM

Telescoping	4 Part boom, 3 part hydraulically powered & fully synchronised. 4th part power extended and manually pinned for safety
Derricking	Through two double acting cylinders
Luffing Range	-4° to +66°

HOIST MECHANISM

Hoist	Hydraulically operated with Six falls rope built in fail safe brake
-------	---

HYDRAULIC SYSTEM

Pump	Vane/Gear type hydraulic pump
Control Valve	5/6 Spool control valve double acting with built in pressure relief valve for trouble free operation

ELECTRICAL SYSTEM

Type	12V, DC
------	---------

OVER ALL DIMENSIONS

Length	10300 mm
Width	2490 mm
Height	3010 mm

OPERATING WEIGHT	20010 Kgs
------------------	-----------

23T-64' (4WD)

Boom Height

19.59 m, 22.58 m with fly jib

Horizontal reach

17 m, 20.15 m with fly jib

Features

Safety

- Fail-safe brakes on hoist
- Counter balance valve for hose failure protection
- Self adjusting hook block

Standard Accessories

- All weather cabin
- Air Brakes (Fail Safe)
- Heavy duty winch - Six falls rope
- Outriggers
- Rear view camera
- 3 m fly jib
- Reflectors
- Turn & reverse lamp
- Side view mirror left & right
- Tool kit
- Reverse gear tuner
- Mono-chrome digital cluster

Optional Features/Accessories

- Over hoist warning system
- Man carrying basket
- Spare wheel
- Additional cabin
- Air conditioned cabin
- Spark arrestor
- Tyre guard
- Front sensor
- Safe load indicator with hydraulic cutoff
- Helper Seat
- Fire extinguisher
- Beacon light
- Dragging winch
- Front glass protector



FLUIDS CAPACITIES (in Litres)

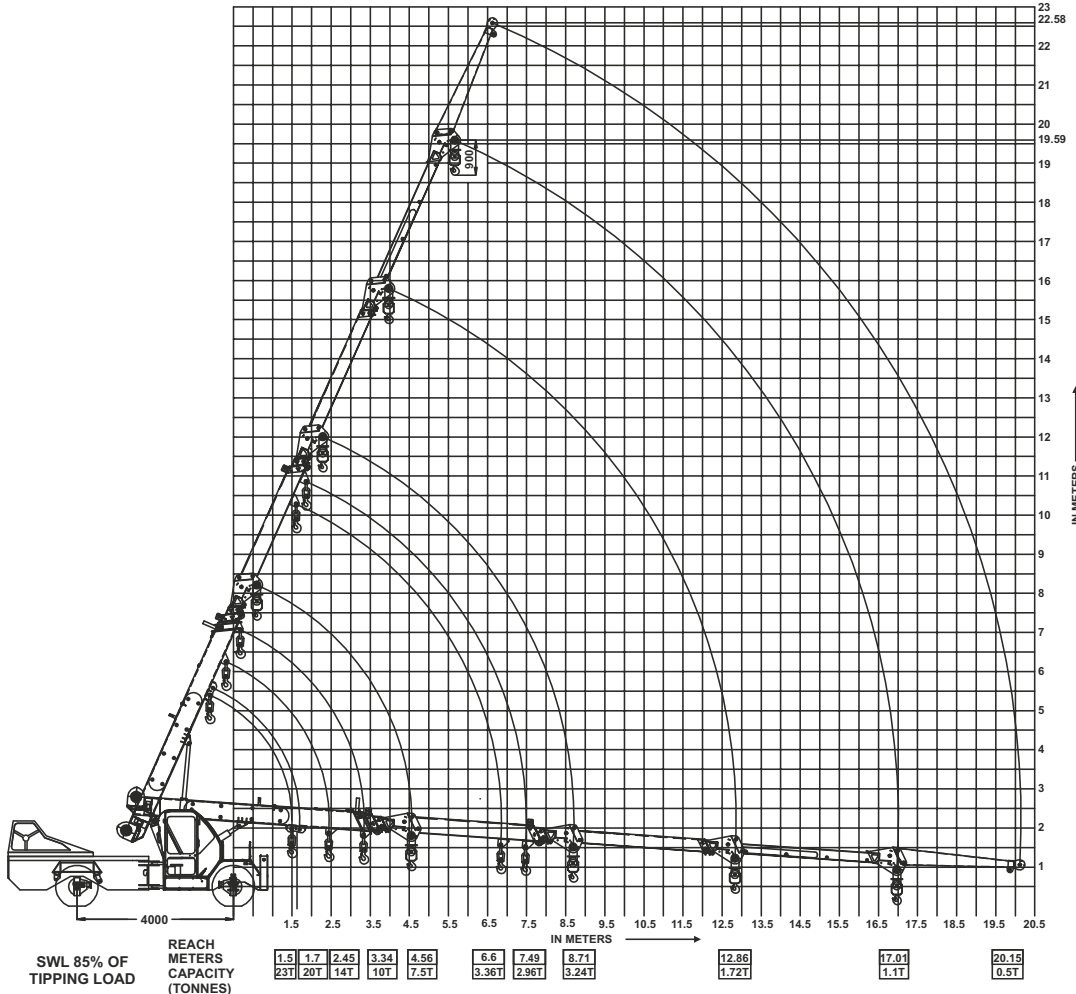
Fuel Tank	195
DEF (Ad-Blue)	27.0
Hydraulic Oil	170
Engine Oil	12.5

GEAR OIL

Transmission	6.25
A.G.B.	8.0
Axle (each)	14.0

Features

- 4-Part telescopic boom.
- Aesthetically design spacious cabin with ergonomic controls for ease of operation and visibility.
- Robust chassis for more reliability.
- Articulated power steering, Hydraulically controlled through two double acting hydraulic rams to ensure proper steering even in loose, sandy & rocky terrains.
- Heavy duty transmission.
- Top traveling speed of 48 kmph for faster inter-site movements.
- Heavy duty hydraulic winch with integrated safety brakes.
- High ground clearance.



The information in this brochure is intended to be general nature only. We reserve the right to change the specifications without notice.



Cabin with better ergonomics



Four side more visibility cabin



Heavy duty winch



Heavy duty drag winch



High Ground Clearance



Easy for maintenance